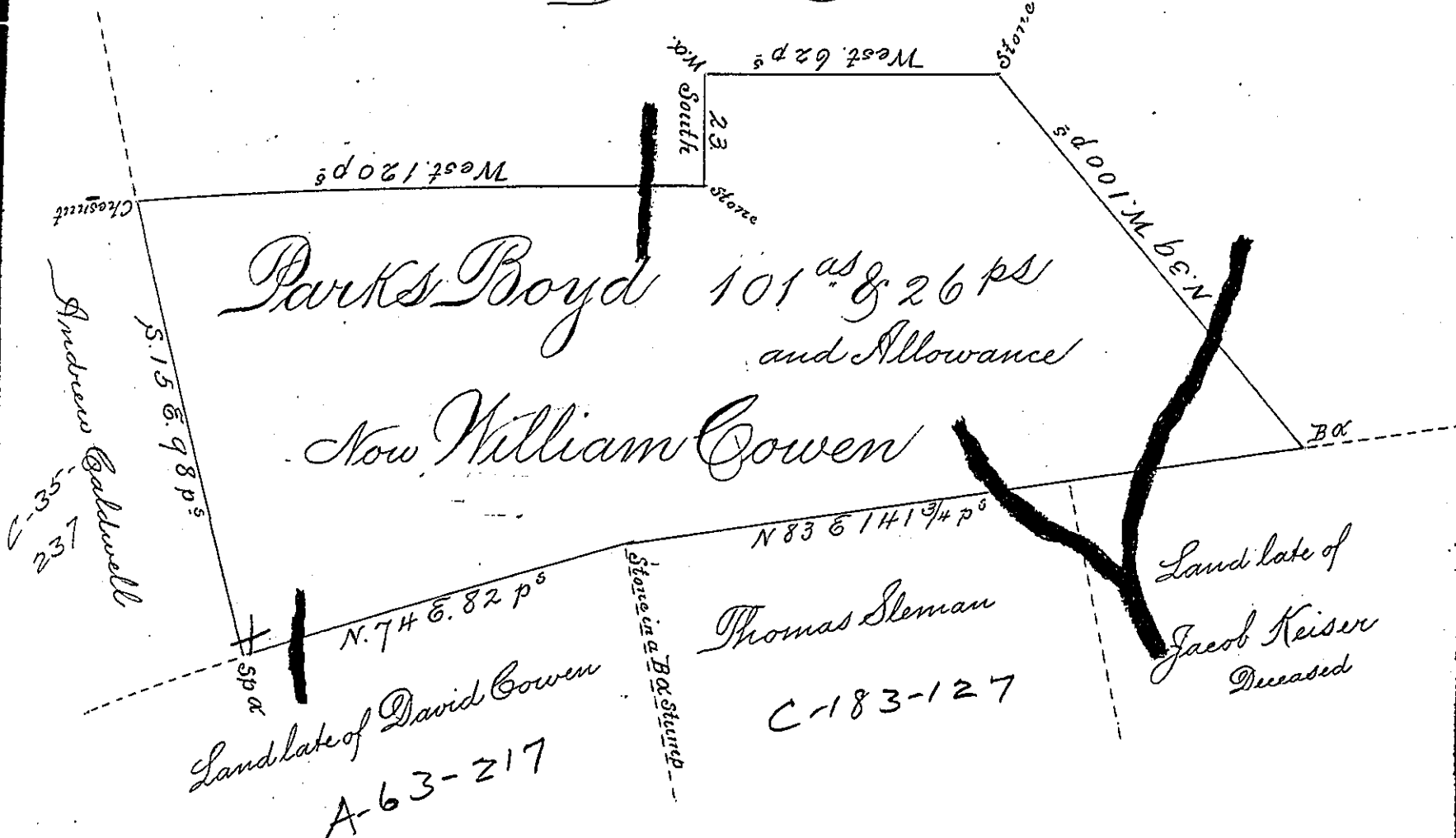


A-13-87

Thomas Fullerton



A Draught of a Piece or Tract of Land Situate in Salisbury Township Lancaster County Containing One Hundred & one Acres & 26 p<sup>s</sup> and the usual Allowance of Six p<sup>t</sup> Cent for Roads &c<sup>a</sup> Surveyed the 19<sup>th</sup> Day of September A.D. 1806 for William Cowen in Right of Parks Boyd &c<sup>a</sup> (It being Part of a Larger Tract of 195<sup>ac</sup> & allowance Formerly Surveyed unto the aforesaid Parks Boyd By Virtue of a Warrant Dated the 2<sup>d</sup> Day of March A.D. 1737.

per Tr Ream D.J.  
& Saml. Ensminger D.J.

To Samuel Cochran, Esq<sup>t</sup>  
Surveyor General

IN TESTIMONY that the above is a copy of the original remaining on file in the Department of Internal Affairs of Pennsylvania, made conformably to an Act of Assembly approved the 16th day of February, 1833, I have hereunto set my Hand and caused the Seal of said Department to be affixed at Harrisburg, this fifth day of November 1901.

James W. Fatta  
Secretary of Internal Affairs.